



Lincolnway Industrial Rail and Air Park

Clinton, Iowa

Available acres: 350

Property and area

The Lincolnway Industrial Rail and Air Park is a developing rail park on the west side of Clinton. The park is located adjacent to four-lane U.S. Highway 30 and the Clinton Regional Airport. The Union Pacific East-West mainline runs to the south with a dedicated spur running into the park and 10,000 foot siding rail adjacent.

Targeted industries in the area include: chemicals processing, metal fabrication and value-added agriculture. There are very few heavy industrial sites in the upper Midwest that offer the logistics capabilities of the Lincolnway Industrial Rail and Air Park.

Site details

Available acres: 350

Topography: Rolling

Zoning: Heavy industrial

Site certification: Iowa Site Certification Program (McCallum Sweeney Consulting)

Adjacent available acres: 120

Setting: Industrial park

Within city limits: Yes

Utilities

Electric: Alliant Energy

Gas: Alliant Energy

Telecommunications: Local service providers

Sewer distribution: City of Clinton

Water distribution: Iowa American Water

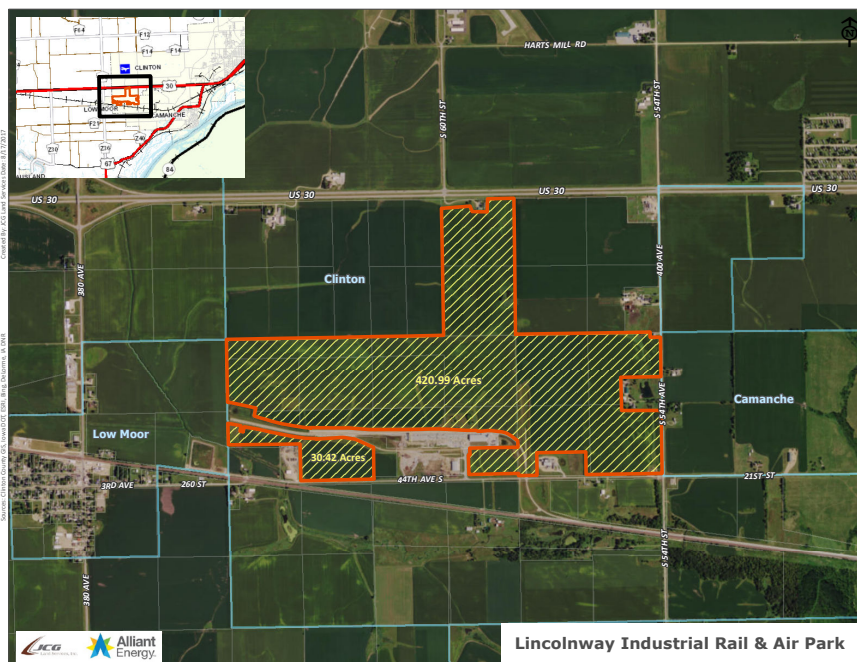
Transportation

Nearest interstate: Interstate 80 (29 miles)

Nearest four-lane highway: U.S. Highway 30 (0.1 miles)

Nearest commercial airport: Quad City International Airport (35 miles)

Rail served: Yes – Union Pacific



LINCOLNWAY INDUSTRIAL RAIL AND AIR PARK

U.S. Highway 30
Clinton, Iowa 52732

OFFERING

Sale price: \$43,560 per acre

CONTACT

Mark Seckman | Senior Economic Development Manager

(319) 786-4392 office | (319) 270-5081 cell
markseckman@alliantenergy.com

Alliant Energy
200 1st St. SE
Cedar Rapids, Iowa 52401

alliantenergy.com/economicdevelopment