

Can I estimate my savings?

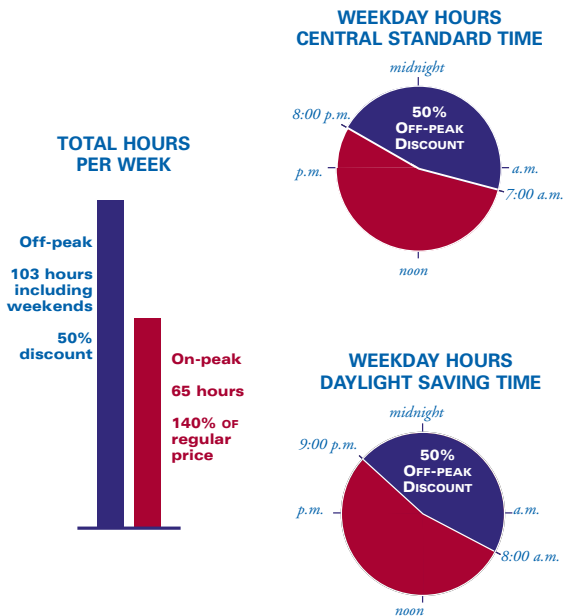
You bet! To start, you will need to know how to read your electric meter and when you use your electric appliances to determine what tasks you can delay until off-peak hours.

Read your electric meter twice a day on weekdays for two weeks – as close to 7 a.m. and 8 p.m. (8 a.m. and 9 p.m. daylight saving time) as possible.

To get the daytime on-peak usage, subtract the morning reading from the evening reading. To get the nighttime off-peak usage, subtract the 8 p.m. reading from the next 7 a.m. (9 p.m. and 8 a.m. daylight saving time) reading.

After two weeks, add the total daytime kilowatt hours. Then, add the night and weekend kilowatt hours. Add the two totals for total kilowatt hours.

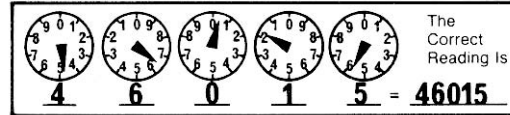
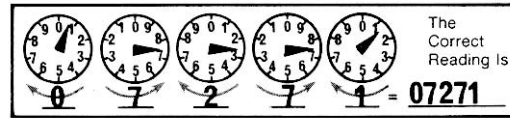
Divide the night and weekend number by the total kilowatt hours to determine the percent of off-peak usage. This will give you an idea of when you use your electricity and how much usage you will need to shift to off-peak to save money with Time-of-Day pricing.



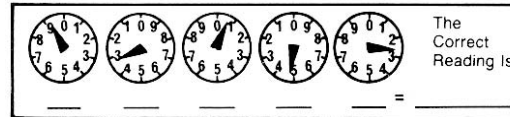
How do I read my electric meter?

Your meter has either four or five dials. Some dials go from 0-9 in a clockwise direction, and other dials move in a counterclockwise direction. Your meter reading will have four or five digits – one digit for each dial on the meter. When the pointer on a dial is between two numbers, always read the smaller number. If the pointer looks as if it is exactly on a number, read one less than the pointer indicates if the pointer on the dial to the right has not yet reached 0.

Review these samples



Try this to practice meter reading



Correct reading is: 93052

What if I don't save money?

If you don't use as much electricity off-peak as you thought and can't adapt your use to fit the program, we will remove your special meter and replace it with a standard meter at no cost. You will be required to stay on the standard rate for the one year minimum term before electing to return to the Time of Day rate.



P.O. Box 351
Cedar Rapids, Iowa 52406-0351
www.alliantenergy.com/timeofday



Do you
have time
to save
money?

Residential
Time-of-Day
pricing



We're on for you.™

Announcing Time-of-Day Pricing

Earn a 50% discount on your electricity with Time-of-Day Pricing!

It's as clear as day and night. The time of day when you use your electricity can make a big difference in how much it costs.

With Time-of-Day pricing from Alliant Energy, you can reduce the amount you pay for electricity just by using it wisely and at the right time. Here's how it works.

50% discount for off-peak use!

All the electric energy you use during off-peak hours – times when the demands for electricity are lowest – is billed at a 50 percent discount.*

When is off-peak? Between the hours of 8 p.m. and 7 a.m. weekdays and all weekend, Central Standard Time. That's 11 hours every weekday – and all day Saturday and Sunday – for a total of 103 hours out of every 168 hours a week that you can save 50 percent.

During Daylight Saving Time, the off-peak hours are 9 p.m. to 8 a.m., Monday – Friday.

Is this a free lunch?

You don't get something for nothing. Although you earn a discount for the off-peak electricity you use, you also pay a 40 percent premium* for the electricity you use during weekday on-peak periods.



How do I save with Time-of-Day?

Make sure you shift as much of your electric usage to the low-cost, off-peak hours. For example:

Water heating –

- *If you heat your water with an electric water heater, take showers and baths after 8 p.m. or before 7 a.m.*
- *Run your dishwasher after 8 p.m. or before 7 a.m..*
- *Use the delay start feature on your appliances, if available.*
- *Save your big laundry loads for the weekends, or late in the day.*
- *If you have an electric water heater, use a timer to make sure you heat water during off-peak hours.*

Cooking –

- *If you have an electric stove and oven, save the heavy baking for evening and weekend hours.*

Cooling –

- *Use your air conditioning only when necessary during on-peak hours.*
- *Use a programmable clock thermostat to schedule cooling during off-peak hours.*
- *Run your dehumidifier at night and on weekends.*

Heating –

- *If you heat with electricity, turn the thermostat up only when necessary during on-peak hours. Use space heaters during off-peak hours.*

Other appliances –

- *Install timer controls on waterbeds, freezers and other energy-using conveniences so they run during off-peak hours.*

You may have to make some changes in lifestyle and change when you use appliances to get the most savings from this program.

Are there any costs involved in switching to Time-of-Day pricing?

A special Time-of-Day meter will be installed at no cost, but you will be billed \$3.35 each month for it. Each bill you receive will show you how much you are saving with Time-of-Day pricing compared to regular pricing. This figure will include the special meter charge, off-peak discount and on-peak premium.

How do I know if I will save money?

The key is how much and when you use your electricity. Residential customers use about 58 percent of their electricity during off-peak hours. Figures show that if you use more than half of your electricity off-peak, you may save money. The amount of savings will depend on how much electricity is used and how much is used off-peak.

Our records also show that savings are larger for customers who use more electricity and that savings are increasingly greater for households using more than 5,000 kilowatt hours per year, or more than 425 kilowatt hours per month. Savings are greatest for customers who are able to shift additional usage to off peak time periods.

Each month, you will receive a bill message on your utility bill noting your Time-of-Day savings. This message will help you determine if you have adequately shifted usage to the off peak time periods.

How do I apply for Time-of-Day savings?

It's easy!

Sign up for Alliant Energy's Time-of-Day program:

1. *Fill out the attached reply card and mail it.*
2. *Enroll online at www.alliantenergy.com/timeofday*
3. *Call the Alliant Energy customer service center at 1-800-ALLIANT (255-4268)*

* Applicable to Energy Charge only. Does not apply to Basic Service Charge and Energy Cost Adjustment.