

Map 6: Land Cover

Wisconsin Power and Light Company
Docket No. IP7145/WS-24-349

Map 6: Land Cover

© 2025 Westwood Professional Services, Inc.

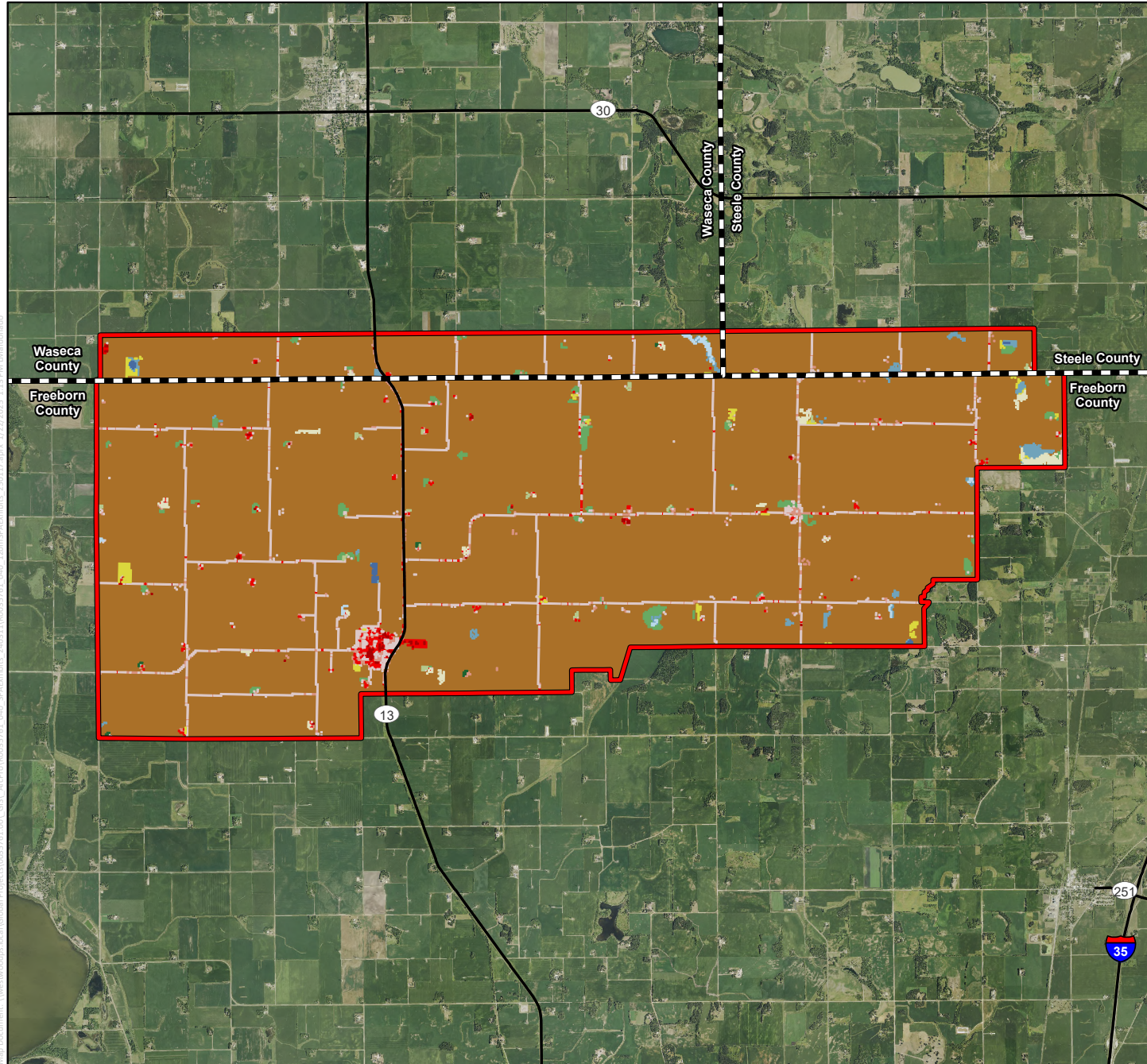
Westwood
Toll Free (888) 937-6190 westwoods.com

Bent Tree North Wind Farm

Freeborn, Steele, and Waseca Counties, Minnesota

Land Cover

Map 6



Legend

-  Project Area
-  County Boundary
-  Major Highway
- NLCD Land Cover**
-  Barren Land
-  Cultivated Crops
-  Deciduous Forest
-  Developed, Low Intensity
-  Developed, Medium Intensity
-  Developed, High Intensity
-  Developed, Open Space
-  Emergent Herbaceous Wetlands
-  Evergreen Forest
-  Hay/Pasture
-  Herbaceous
-  Mixed Forest
-  Open Water
-  Woody Wetlands

Data Source(s): Westwood (2025); NAIP (2023); NLCD (2021); U.S. Census Bureau (2023).



Map Document: \\westwoods-fac\Global Projects\035761\001_GIS_ArcPro\035761_040_SPA\Exhibits_250117.aprx 1/22/2025 1:13 PM D:\d\donado