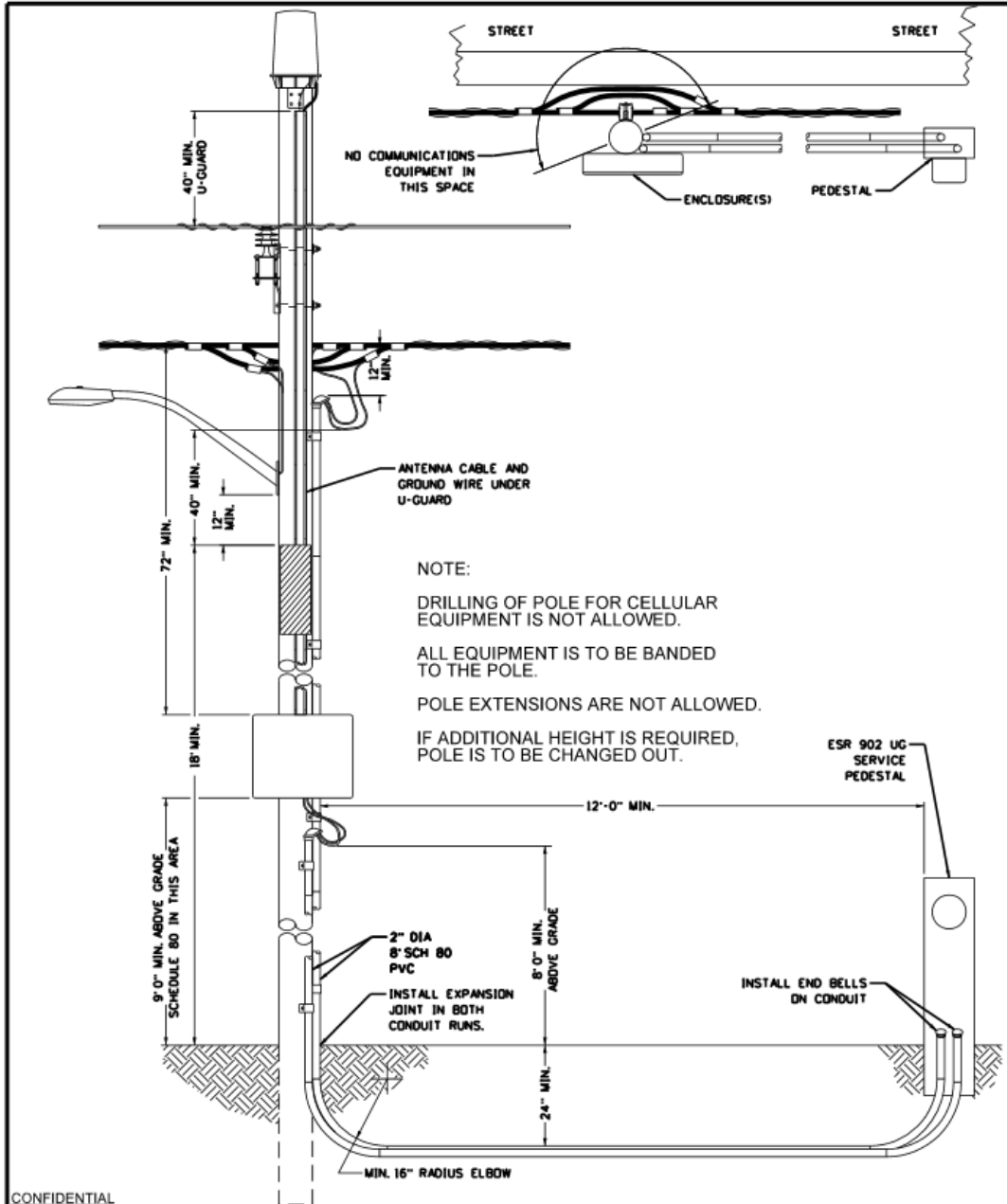


# LICENSOR CONSTRUCTION STANDARDS



NOTE:  
 DRILLING OF POLE FOR CELLULAR EQUIPMENT IS NOT ALLOWED.  
 ALL EQUIPMENT IS TO BE BANDED TO THE POLE.  
 POLE EXTENSIONS ARE NOT ALLOWED.  
 IF ADDITIONAL HEIGHT IS REQUIRED, POLE IS TO BE CHANGED OUT.

**CONFIDENTIAL**

These documents are for the use of Alliant Energy. Alliant Energy disclaims all warranties, both expressed and implied. Use by anyone other than Alliant Energy is at their own risk.

ATTACHMENT REQUIREMENTS FOR CUSTOMER OR FOREIGN OWNED COMMUNICATION EQUIPMENT BETWEEN SUPPLY AND COMMUNICATION LINES.  
 APPLICABLE DRAWING REFERENCE: APPENDIX.doc  
 DATE: 03/11/2013      REV:



**WIRELESS CELLULAR SYSTEMS  
 ATTACHMENT REQUIREMENTS  
 FOR EQUIPMENT**

Scale: N.T.S.      DWG. NO. 031113MAH

902. UNDERGROUND SERVICE, 120/240 VOLT, SINGLE-PHASE, THREE-WIRE, 200 AMP. MAX. (CATV, TELEPHONE, MUNICIPAL), CONTINUED.

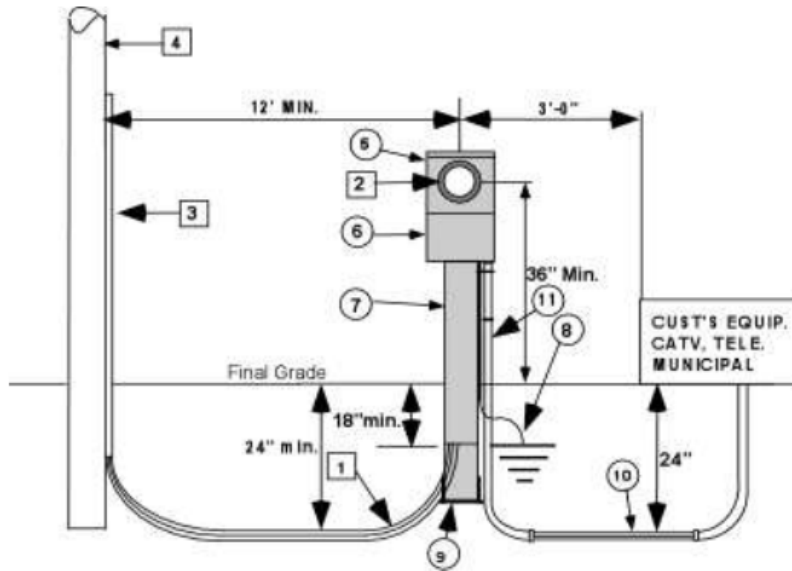
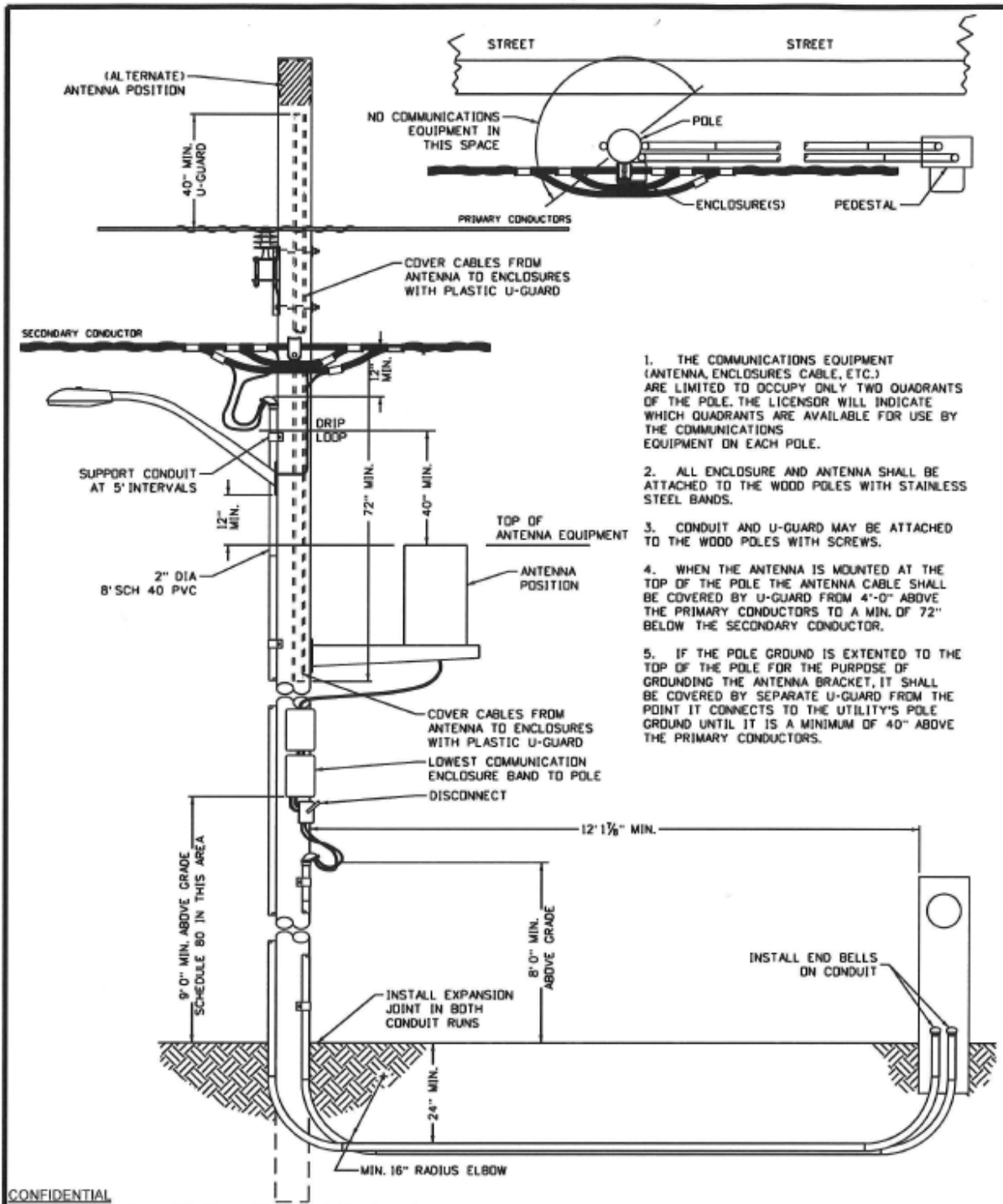


Fig 902



1. THE COMMUNICATIONS EQUIPMENT (ANTENNA, ENCLOSURES, CABLE, ETC.) ARE LIMITED TO OCCUPY ONLY TWO QUADRANTS OF THE POLE. THE LICENSOR WILL INDICATE WHICH QUADRANTS ARE AVAILABLE FOR USE BY THE COMMUNICATIONS EQUIPMENT ON EACH POLE.
2. ALL ENCLOSURE AND ANTENNA SHALL BE ATTACHED TO THE WOOD POLES WITH STAINLESS STEEL BANDS.
3. CONDUIT AND U-GUARD MAY BE ATTACHED TO THE WOOD POLES WITH SCREWS.
4. WHEN THE ANTENNA IS MOUNTED AT THE TOP OF THE POLE THE ANTENNA CABLE SHALL BE COVERED BY U-GUARD FROM 4'-0" ABOVE THE PRIMARY CONDUCTORS TO A MIN. OF 72" BELOW THE SECONDARY CONDUCTOR.
5. IF THE POLE GROUND IS EXTENDED TO THE TOP OF THE POLE FOR THE PURPOSE OF GROUNDING THE ANTENNA BRACKET, IT SHALL BE COVERED BY SEPARATE U-GUARD FROM THE POINT IT CONNECTS TO THE UTILITY'S POLE GROUND UNTIL IT IS A MINIMUM OF 40" ABOVE THE PRIMARY CONDUCTORS.

**CONFIDENTIAL**

These documents are for the use of Alliant Energy. Alliant Energy disclaims all warranties, both expressed and implied. Use by anyone other than Alliant Energy is at their own risk.

ATTACHMENT REQUIREMENTS FOR CUSTOMER OR FOREIGN OWNED COMMUNICATION EQUIPMENT BETWEEN SUPPLY AND COMMUNICATION LINES.



**DAS SPEC**  
DISTRIBUTED ANTENNA SYSTEM

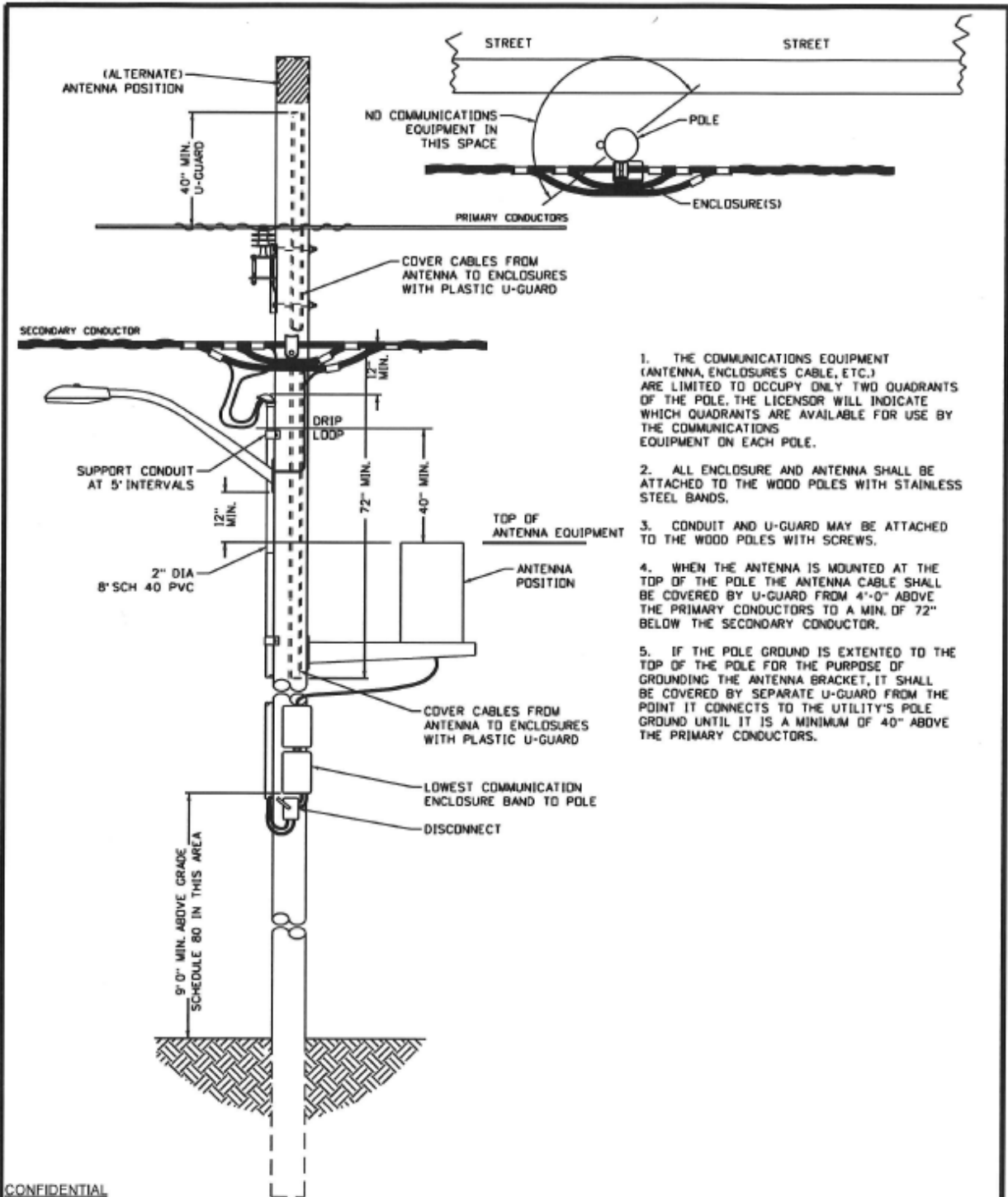
APPLICABLE DRAWING REFERENCE: APPENDIX.doc

DATE: 04-15-2014

REV: 6/14

Scale: N.T.S.

DWG. NO. VER-MRRU-1



1. THE COMMUNICATIONS EQUIPMENT (ANTENNA, ENCLOSURES, CABLE, ETC.) ARE LIMITED TO OCCUPY ONLY TWO QUADRANTS OF THE POLE. THE LICENSOR WILL INDICATE WHICH QUADRANTS ARE AVAILABLE FOR USE BY THE COMMUNICATIONS EQUIPMENT ON EACH POLE.
2. ALL ENCLOSURE AND ANTENNA SHALL BE ATTACHED TO THE WOOD POLES WITH STAINLESS STEEL BANDS.
3. CONDUIT AND U-GUARD MAY BE ATTACHED TO THE WOOD POLES WITH SCREWS.
4. WHEN THE ANTENNA IS MOUNTED AT THE TOP OF THE POLE THE ANTENNA CABLE SHALL BE COVERED BY U-GUARD FROM 4'-0" ABOVE THE PRIMARY CONDUCTORS TO A MIN. OF 72" BELOW THE SECONDARY CONDUCTOR.
5. IF THE POLE GROUND IS EXTENDED TO THE TOP OF THE POLE FOR THE PURPOSE OF GROUNDING THE ANTENNA BRACKET, IT SHALL BE COVERED BY SEPARATE U-GUARD FROM THE POINT IT CONNECTS TO THE UTILITY'S POLE GROUND UNTIL IT IS A MINIMUM OF 40" ABOVE THE PRIMARY CONDUCTORS.

**CONFIDENTIAL**

These documents are for the use of Alliant Energy. Alliant Energy disclaims all warranties, both expressed and implied. Use by anyone other than Alliant Energy is at their own risk.

ATTACHMENT REQUIREMENTS FOR CUSTOMER OR FOREIGN OWNED COMMUNICATION EQUIPMENT BETWEEN SUPPLY AND COMMUNICATION LINES.

APPLICABLE DRAWING REFERENCE: APPENDIX.doc

DATE: 04-15-2014

REV: 6/14



DAS SPEC  
DISTRIBUTED ANTENNA SYSTEM

Scale: N.T.S.

DWG. NO.

VER-MRRU-2